



PALOS VERDES HIGH SCHOOL

600 Cloyden Road ~ Palos Verdes Estates, CA 90274
(310) 378.8471



Welcome to Sophomore Counseling January 2011



PVHS Counseling Department
and
College and Career Center
would like to thank the PEF
for their generous support!

It's Time To Think About College



Copyright 1990, Twentieth Century Fox



Graduation Subject Requirements vs. College Subject Requirements

Subject	PVHS	CSU	UC	Selective Colleges
English	4 Years	4 Years	4 Years	4 Years
Math	2 Years	3 Year required/ 4 Years Rec.	3 Yrs. required 4 Yrs. Rec.	4 Years
History/Social Science	3 Years	2 Years	2 Years	4 Years
Science	1 Yr Biological 1 Yr Physical	2 Years	2 Yrs. required 3 yrs. Rec.	4 Years
Foreign Language	0-1 Year	2 Years	2 Yrs. Required 3 Yrs. Rec.	4 Years
Fine Art	0-1 Year	1 Year	1 Year	
Elective		1 Year	1 Year	



NCAA Core Course Requirements

Division I

16 Core Courses

- 4 years English
- 3 years math (Algebra 1 or higher)
- 2 years natural/physical science (1 year of lab)
- 1 year additional English, math or natural/physical science
- 2 years social science
- 4 years additional courses (from any area above, foreign language or nondoctrinal religion/philosophy)

Division II

14 Core Courses (16 beginning 8/1/2013)

- 3 years English
- 2 years math (Algebra 1 or higher)
- 2 years natural/physical science (1 year of lab)
- 2 years additional English, math or natural/physical science
- 2 years social science
- 3 years additional courses (from any area above, foreign language or nondoctrinal religion/philosophy)

Visit www.eligibilitycenter.org for information regarding
Approved PVHS Courses and Eligibility Worksheets



There is a college that is right
for you...

College	Average Accepted GPA (weighted)	Average Accepted SAT (2400 scale)
Stanford	4.75	2139
Boston College	4.61	2105
UC Santa Barbara	4.33	1956
Loyola Marymount	4.01	1831
U of Colorado Boulder	3.81	1769
University of Arizona	3.62	1712
Sonoma State	3.47	1643

Data Source: PVHS Naviance as of January 2010



COLLEGE...
A match to
be made,
not a prize to
be won!

Looking for that match...

- Know yourself...Identify the priorities for you and your family
- Look for schools that match your student's strengths and learning style
 - Location, Location, Location
 - Research!
 - Visit colleges
 - Be realistic and maintain perspective
- Remember, 84% of all colleges accept more than 50% of the students who apply to them, according to the National Association for College Admission Counseling.



Factors in College Admission

Factors

- Grades in College Prep Courses
- Strength of Curriculum
- Standardized admissions tests
- Grades in all courses
- Essay or Writing Sample
- Teacher Recommendation
- Student's Demonstrated Interest
- Counselor Recommendation
- Interview
- AP Test Scores
- Extra Curricular Activities

Percent of Colleges Reporting "Considerable Importance"

75%

62%

54%

52%

27%

21%

21%

20%

11%

8%

7%

Information from 2009 NACAC State of College Admissions



Starting the College Search Process with Naviance



PVHS College & Career Center

www.pvhigh.com CCC



Palos Verdes High School

600 Cloyden Road
Palos Verdes Estates, CA 90274

310-378-8471

CEEB Code: 052358



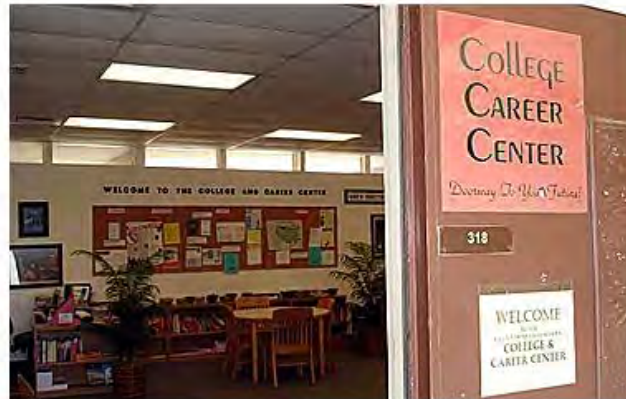
[Home](#) [School Info](#) [Staff](#) [Academics](#) [Counseling](#) [CCC](#) [Student Life](#) [Athletics](#) [Parents](#)

Quick Links

Daily Bulletin
Principal's Weekly Update
Bell Schedule
A/B Schedule
Calendar
Future Sea Kings
Pathways for Change
NAVIANCE
Live From 205
ED-LINE
Library
Booster Club

College & Career Center: Welcome

CCC: Rm 318 | Phone: 310-378-8471 Ext 618/347/387 | pvhsgcc@pvpusd.k12.ca.us | CEEB: 052358



The College & Career Center hours:
Monday - Friday 9:00 a.m. to 1:00 p.m.
Extended hours Tuesday through
Thursday by appointment
Inquiries may be sent to:
pvhsgcc@pvpusd.k12.ca.us

General Information

NAVIANCE

Web-based resource that helps you manage your

High
School
Course
Selection

Your
Resume
and
Activities

Search
for the
right
college

Interest
Inventory and
Personality
Profiles


College
Applications
and
Acceptances

NAVIANCE: How to log-in


www.pvhigh.com

Use
the
quick
link





Palos Verdes High School
600 Cloyden Road
Palos Verdes Estates, CA 90274
310-378-8471
CEEB Code: 052358



**Booster Club's Annual
Catch The Wave event
"Cabo Cabana"**
Saturday February 27 @ PV County Club
...more info

Home School Info Staff Academics Counseling CCC Student Life Athletics Parents

Quick Links	News & Announcements	Upcoming Events
Daily Bulletin	Principal's Weekly Update We will finish finals today and school will once again be out at 12:10. Perhaps the weather worked in our favor and I hope all your kids did well on their finals. The 2nd semester starts Monday....more	Full Month Calendar
Principal's Weekly Update	Attention 8th Graders: Are you interested in PVHS? Come to Shadow Day and see what PVHS is all about! Please email Kristen Huber at Huberk@pvpusd.k12.ca.us to reserve your spot. There are 75 open spots per day. When emailing please indicate the name of the student and the current school they attend.	Today ◀ ▶ Sunday, January 24 ▼ Week
Bell Schedule	Shadow Day January 25 2009 8:30am -12pm at PVHS - Lunch is provided Registration Deadline - January 17th	Sunday, January 24
A/B Schedule	More info for Future Sea Kings...	4:00pm Youth Orchestra Meet & Greet
Calendar		Monday, January 25
Future Sea Kings		8:30am Shadow Day
Pathways for Change		3:00pm Girls Water Polo
NAVIANCE		Tuesday, January 26
Live From 205		9:15am PTSA General Meeting
ED-LINE		10:00am Arizona State University visit
Library		10:30am Arizona State University School of
Booster Club		3:00pm Boys Soccer vs Mira Costa
PTSA The Wave Newsletter		3:00pm Boys Soccer vs Mira Costa
The Point		3:00pm Girls Soccer vs Mira Costa
		5:30pm Sophomore Parent Night/ PLAN G

Enter your
User Name
and
Password



If you have
difficulty
contact the
CCC in
Room 318

Welcome to Family Connection
Nice to see you again! Please log in.

Username


password

remember me

[Log In](#)

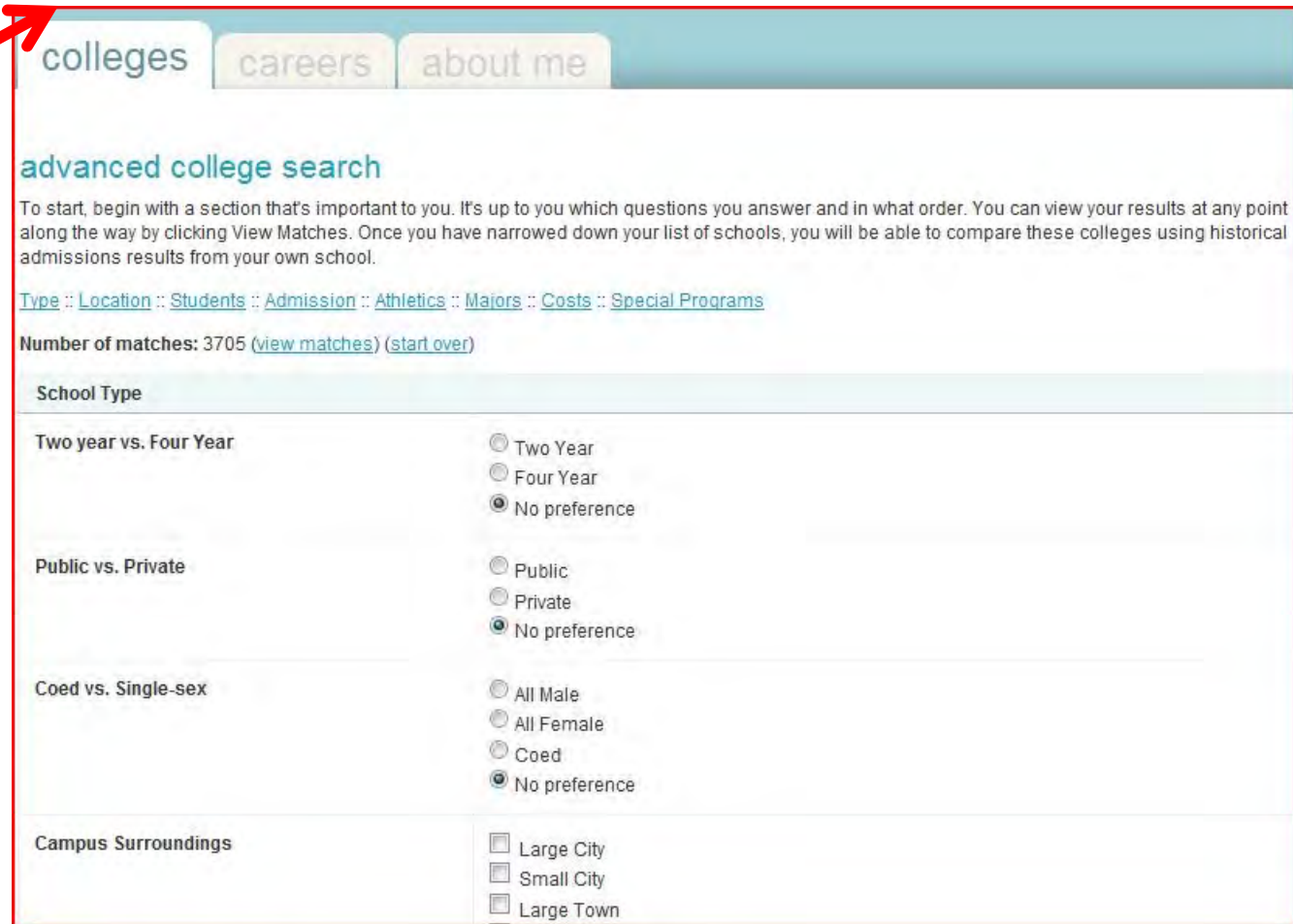
[forgot your password?](#) [need additional help?](#)

are you new here?
[i'm a guest >](#)
[i need to register >](#)

 **Palos Verdes High School**
600 Cloyden Road
Palos Verdes Estates CA 90274
p: (310) 378-8471

COLLEGE SEARCH ON NAVIANCE

Click on the tab to begin searching for colleges



The screenshot shows the Naviance website's college search interface. At the top, there are three tabs: 'colleges', 'careers', and 'about me'. A red arrow points to the 'colleges' tab. Below the tabs, the page is titled 'advanced college search'. A paragraph of text explains the search process: 'To start, begin with a section that's important to you. It's up to you which questions you answer and in what order. You can view your results at any point along the way by clicking View Matches. Once you have narrowed down your list of schools, you will be able to compare these colleges using historical admissions results from your own school.' Below this text are several filter categories with radio buttons: 'Type', 'Location', 'Students', 'Admission', 'Athletics', 'Majors', 'Costs', and 'Special Programs'. The 'Number of matches' is displayed as 3705, with links for '(view matches)' and '(start over)'. The 'School Type' section includes three filter groups: 'Two year vs. Four Year' (with options for Two Year, Four Year, and No preference), 'Public vs. Private' (with options for Public, Private, and No preference), and 'Coed vs. Single-sex' (with options for All Male, All Female, Coed, and No preference). The 'Campus Surroundings' section includes three checkboxes: 'Large City', 'Small City', and 'Large Town'.

colleges careers about me

advanced college search

To start, begin with a section that's important to you. It's up to you which questions you answer and in what order. You can view your results at any point along the way by clicking View Matches. Once you have narrowed down your list of schools, you will be able to compare these colleges using historical admissions results from your own school.

[Type](#) :: [Location](#) :: [Students](#) :: [Admission](#) :: [Athletics](#) :: [Majors](#) :: [Costs](#) :: [Special Programs](#)

Number of matches: 3705 ([view matches](#)) ([start over](#))

School Type

Two year vs. Four Year

Two Year
 Four Year
 No preference

Public vs. Private

Public
 Private
 No preference

Coed vs. Single-sex

All Male
 All Female
 Coed
 No preference

Campus Surroundings

Large City
 Small City
 Large Town

COLLEGE SEARCH ON NAVIANCE

How to find colleges that fit your interest

How to find out information about a college

Compare colleges

Find out acceptance statistics for other PVHS
students who applied to a college

Read what other students say about a college

Link directly to a college website

Welcome

Teri Kuwahara

Home

Question Of The Day

MTP Score: [Calculate Score](#)

[ACT Method](#) | [SAT Method](#)

[MTP Videos](#)

Evaluation Test

Math	Start Test
Critical Reading	Start Test
Writing	Start Test

Lessons

[Math](#)
[Critical Reading](#)
[Writing](#)
[Vocabulary Builder](#)
[Words Mastered:](#)

Practice Questions

Score: [Math](#)
[Multiple Choice](#)
[Grid-Ins](#)

[Critical Reading](#)
[Sentence Completion](#)
[Reading Passages](#)

[Writing](#)

Hello Teri, welcome to Method Test Prep. Follow the checklist below. Working through the checklist is the smartest way to raise your score.

Don't stress if you get a question wrong. Just make sure to read the explanation thoroughly so that you will be able to answer that type of question when you take the exam.

Raise Your Score Checklist

Week: 1

1. Take the Math Evaluation- [CLICK HERE](#) to begin 15 minute task.
2. Take the Reading Evaluation
3. Take the Writing Evaluation
4. Listen to the first math lesson and take the quiz at the bottom of the lesson

Week: 2

5. Get 15 words into your words mastered column
6. Take the first reading quiz
7. Listen to the second math lesson and take the quiz at the bottom of the lesson
8. Take second reading quiz

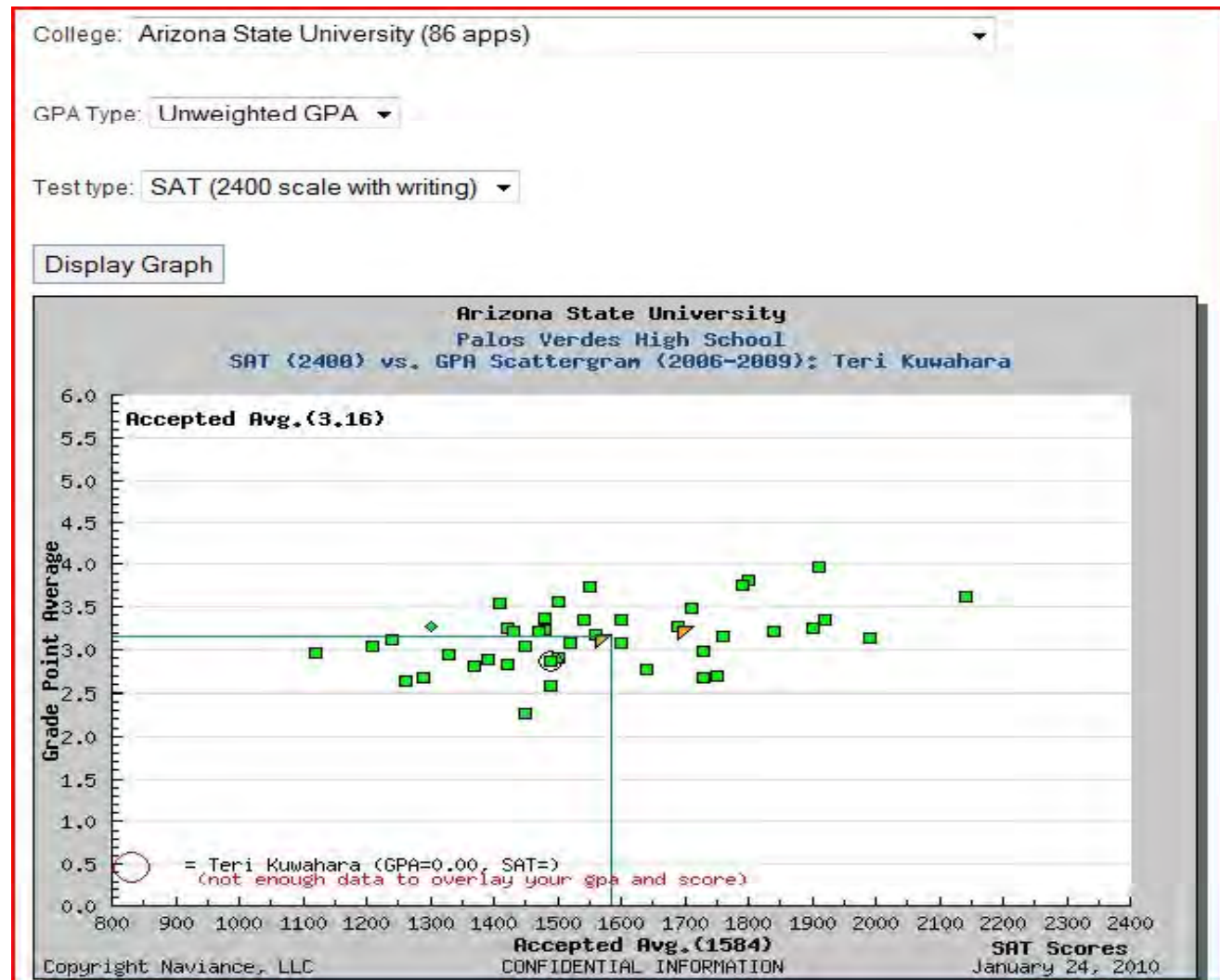
Week: 3

9. Listen to the third math lesson and take the quiz at the bottom of the lesson
10. Listen to the fourth math lesson and take the quiz at the bottom of the lesson

Free test prep made possible by the PVHS Booster Club

Scattergrams on NAVIANCE

Shows
accept
and
decline
statistics
for PVHS
students



College Acceptance Statistics for PVHS students

www.pvhigh.com > CCC > college acceptances

College Acceptances

CCC: Rm 318 | Phone: 310-378-8471 Ext 618/347/387 |

The Class of 2009 went on to attend over 119

[College acceptance and matriculation Profile of the Class of 2009](#)

Students at PVHS are encouraged to apply to the colleges and future endeavors. All students have access to Navian. PVHS students have been accepted to over ??? colleges including all California State Universities, University of California

Palos Verdes High School

Class of 2010 Profile & College Summary

The Class of 2010 represented the 6th graduating class since the school re-opened in 2003. In the 2009-10 academic year, the total enrollment at Palos Verdes High School was 1817 students. The Class of 2010 consisted of 449 students.

COLLEGE ACCEPTANCE AND MATRICULATION

The Class of 2010 went on to attend over 118 different colleges in 29 states. Two student chose to study abroad. They were accepted to 250 different colleges, including all University of California and California State University campuses. A total of 24 students were accepted to an Ivy League school, eight out of eight member institutions.

A complete list of colleges where Palos Verdes High School students have been accepted may be found on the school website: http://www.pvhigh.com/CCC/CCC_college_acceptances.html

PVHS College Acceptances:

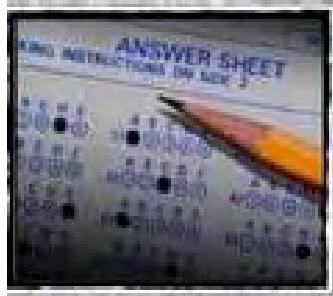
College	State	Number of Students
Academy of Art University		
The University of Alabama at Birmingham		
The University of Alabama		
University of Alaska Fairbanks		
Alfred University		
Allegheny College		
The American Musical and Dramatic Academy		
American University		
American University of Paris		
Amherst College		
University of Arizona South		
Arizona State University		
Arizona State University West		
The University of Arizona		
Phoenix	AZ	3
Tucson	AZ	178



Sophomore Guidance Lessons

- Wednesday and Thursday this week during English classes
- All Sophomores will receive an introduction to Naviance including:





College Admissions Testing



	PSAT	SAT I
Critical Reading:	50 minutes	70 minutes 48 Reading Comprehension 19 Sentence Completion
Math:	50 minutes Algebra II level math is de-emphasized on the PSAT.	70 minutes 44 Multiple choice 10 Grid-Ins Tests through Algebra II Scientific / Graphing Calculators are encouraged.
Writing:	30 minutes No essay on the PSAT.	60 minutes Short essay 25 Sentence Improvements 18 Error Recognitions 6 Paragraph Improvements
Timing:	2 hours 10 minutes	3 hours 45 minutes
Cost:	Price changes annually	\$47.00
Scoring:	60-240 Selection Index	600-2400 Combined Score

Comparison of SAT and ACT

SAT	ACT	Differences
Writing	English w/ writing option	<ul style="list-style-type: none">-Essay 1st section of SAT and last section of ACT.-ACT typically narrow focus- SAT broad theme
Math	Math	<p>ACT- covers through Trig SAT- covers through Alg 2</p>
Critical Reading	Reading	Tests similar reading skills
N/A	Science	No analogue on SAT, measures interpretation, analysis, evaluation, reasoning, problem-solving skills
200-800 Scale	1-36 scale	Scaled Score
600-2400 sum	1-36 scale	Composite or Combined Score

Which one ?

ACT

vs.

SAT

PLAN



PSAT

SAT Subject Exams

Designed to demonstrate academic achievement in a specific subject area

- Subject exams are one hour in length and up to three tests can be taken on a single date
- To maximize subject test scores, take the test after finishing the last class in that subject area.
- Not all subject tests are given on all test dates and you can not take the Subject Tests on the same day as the SAT
- Check with specific college/universities regarding number of required subject tests

SAT Subject Test Options

- Literature
- US History
- World History (only in December and June)
- Biology (Ecological or Molecular)
- Chemistry
- Physics
- Math Level 1 and 2
- Languages: (with Listening only in November)
 - Chinese, French, German, Modern Hebrew, Italian, Japanese, Korean, Latin, Spanish

**For registration and
more information about
the SAT I & II, please
visit:**



www.collegeboard.com



CollegeBoard connect to college success

**For registration and
more information about
the ACT, please visit:**



www.act.org

ACT[®]



College Admission Test Timeline

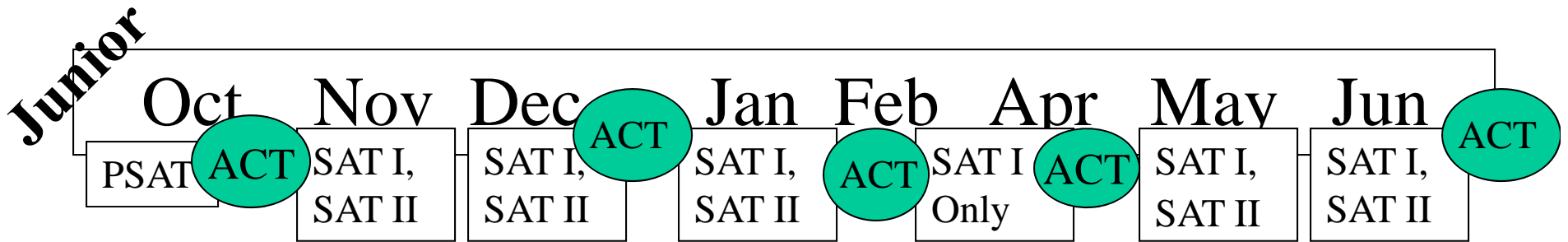
Sophomore

Oct	Nov	Dec	Jan	Mar/Apr	May	Jun
PLAN					Sat II	Sat II

You will take the PLAN in the fall of your Sophomore year. The PLAN is a powerful predictor of success on the ACT, an early indicator of college readiness and a tool to explore careers that match your interest.

You may also take your first SAT II Subject Tests in June of your sophomore year. Since you may already be studying for finals in subjects like biology or history, this an excellent opportunity to try the SAT Subject Tests in the same subjects.

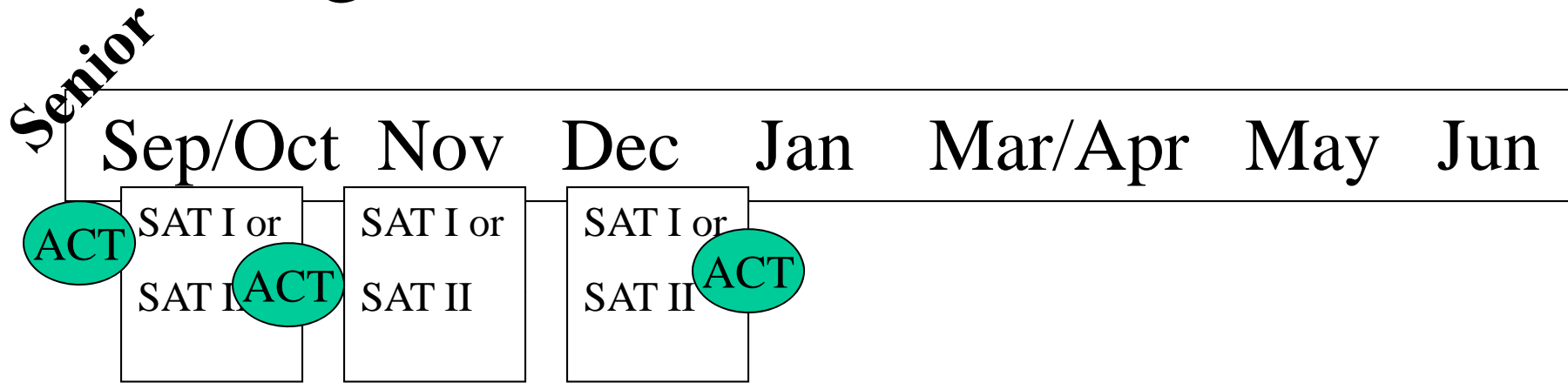
College Admission Test Timeline



You will take your PSAT in the fall of your junior year. Your PSAT score will indicate how you would do on an SAT without further preparation. It will also help you identify any weak areas that you may want to improve before you take your first SAT. By the end of your junior year you should have taken at least one SAT I and anywhere from one to three Subject Test/s.

Most colleges will accept either an SAT I or an ACT score. Therefore, it is advantageous to take both the SAT I and the ACT, since you may do better on one test than on the other.

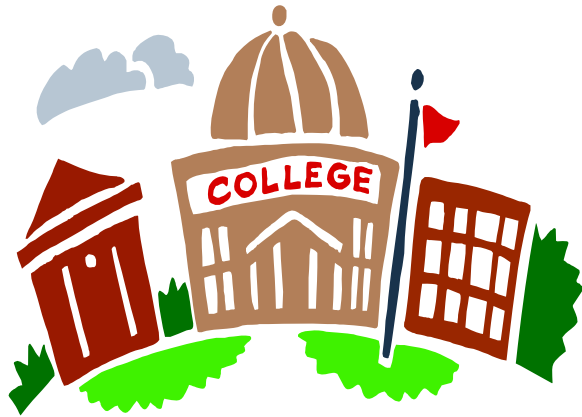
College Admission Test Timeline



It is advisable to take the SAT more than once, since most colleges will simply use your highest scores in their evaluation process. The fall of your senior year is an ideal time to take your final SAT I and any Subject Tests that you may still need to complete your applications.

College Entrance Test Information 2011

Date	Test	Registration Date	Late Registration
March 12, 2011	SAT only	February 11, 2011	February 25, 2011
April 9, 2011	ACT w/ writing	March 4, 2011	March 18, 2011
May 7, 2011	SAT SAT Subject Tests	April 8, 2011	April 22, 2011
June 4, 2011	SAT SAT Subject Tests	May 6, 2011	May 20, 2011
June 11, 2011	ACT w/ writing	May 6, 2011	May 20, 2011



University of California system:

SAT I or ACT w/ writing

California State University system:

Requires the SAT I or the ACT only.

Other Colleges:

Always verify the individual requirements for any college
you are considering.

**Visit fairtest.org for a list of schools that de-emphasize the use of
SAT/ACT for admissions.**

The CEEB Code for

Palos Verdes High School is 052358



College & Career Center

Teri Kuwahara, Director
kuwaharat@pvpusd.k12.ca.us

Teresa Hoffman,
Scholarship & Financial Aid Specialist
hoffmant@pvpusd.k12.ca.us

CCC Hours:
Monday through Friday: 9:00 a.m. to 1:00 p.m.

Other hours by appointment



**For more information, please
contact PVHS Counselors:**

Paula Stapleton	A – Co	stapleton@pvpusd.k12.ca.us
Pat Colin	Cop – Fi	colinp@pvpusd.k12.ca.us
Adam Genovese	Fj – Ke	genovesea@pvpusd.k12.ca.us
Trista Ramirez	Kf – M	ramirez@pvpusd.k12.ca.us
Amerika McHugh	N – Se	mchugha@pvpusd.k12.ca.us
Andrea Pellicane	Sf – Z	pellicanea@pvpusd.k12.ca.us